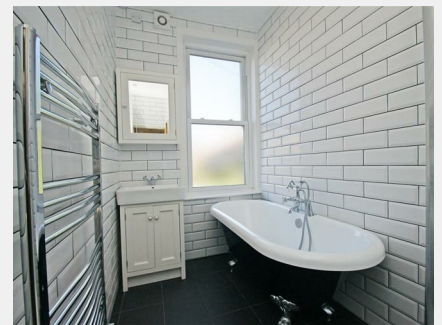


Moores Estate Agency
14 St. Annes Road, Headingley,
Leeds LS6 3NX
Tel: 01132742033
Email: rentals@moore2let.co.uk



3 Broomfield Road, Headingley, Leeds, LS6 3DE

£1,000 PCM
Available: 1st March 2019

This BEAUTIFUL & CHARMING STONE THROUGH TERRACE sits proudly on Broomfield Road which is a quiet cobbled street tucked away from the hustle and bustle of Headingley yet with everything just a stone's throw away. These houses have very GENEROUS ROOM PROPORTIONS and are ideal for a professional couple or small family who would like a spacious home in this prime area. Set over 3 floors, the ground floor provides a large lounge with FEATURE FIREPLACE, a FANTASTIC DINING KITCHEN with appliances provided, including DISHWASHER as well as a UTILITY ROOM with door to the COURTYARD STYLE GARDEN which is tenant friendly & low maintenance. There are 3 LARGE DOUBLE BEDROOMS one of which occupies the entire top floor and has an abundance of fitted storage. STYLISH AND ELEGANT BATHROOM with CLAW FOOT BATH & DOUBLE SHOWER CUBICLE. There is also a separate WC to the first floor. Previously lived in by the landlord, the property has lovely charm and character and is available UNFURNISHED so that tenants can bring their own items to make this feel like home. £120 Application Fee per applicant.